

MOVING TO AUSTIN

How to choose the right community for your family



ZERO IN ON THE BEST OF THE BEST

Ranked No. 1 on the prestigious U.S. News & World Report Best Places to Live 2017 list. Austin is the sum of many great communities. But how do you find the perfect community – the one that feels just like home? Here are five major points to consider.

1 LOCATION



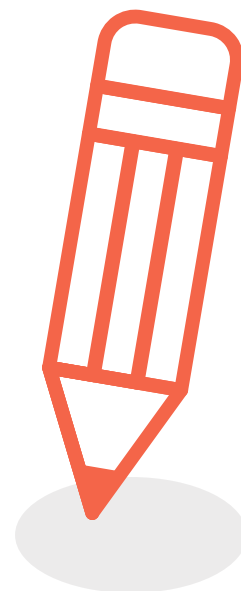
There's a reason location is repeated three times ("Location, Location, Location") as the most enduring rule of real estate.

Choose a community that is close to everything, including your heart. Beautiful surroundings make it easy to love where you live.

2 SCHOOL DISTRICT

If you have kids or are planning to start a family, a top-rated school district ranks right at the top of your priorities.

A strong community commitment to education gives you a sense of their values. Whether or not you have kids, a top-rated school district can enhance home values and resale potential.



3 COMMUNITY AMENITIES



What community amenities are most important to you? A clubhouse where you can enjoy organized events and impromptu fun with family and neighbors? An extensive trail system? How about a well-equipped fitness center?

4 THE VIBE



Sometimes a community personality just happens. In the best cases, the vibe is nurtured along by a vision that's brought to life through the master plan and amenities, along with a strong commitment to fostering neighborliness.

VS

In other cases, personality does not develop within a community. There is no sense of belonging and very rarely do neighbors come to the rescue of other neighbors. There are no planned events to encourage residents to interact with one another.



5 THE REVIEWS



Get it straight from some possible future neighbors, as well as respected real estate agents. Also, check out reviews on Facebook and other social media sites. You will be glad that you spent the time to talk with those that know the community best.

SWEETWATER®

SWEETWATERLIVING.COM

This material is provided for informational purposes only and should not be relied on for tax or legal advice. View complete disclaimer at www.sweetwaterliving.com/terms-of-use